

AQUA GLASS®

Installation Instructions for the E-Series Shower System model numbers: 656032AL/R; 656032BL/R; 654836CL/R; 654836CC; 654242AL/R; 654242AC; 6W6032AA; 6W4836AA; 6W4242AA

**Congratulations on the purchase of your new E-Series Shower System.
These instructions cover the installation and maintenance of your new Aqua Glass shower. They should remain with the shower after installation for future reference by the homeowner.**

Aqua Glass Limited Warranty

What Does This Warranty Cover?

Aqua Glass warrants the original consumer purchaser that this shower system, shower base, shower wall set will be free from defect in materials and workmanship for the time period listed below

What is the Period of Coverage?

- 5 years Residential
- 3 years Commercial

What Does This Warranty Not Cover?

This warranty does not cover damage or defects relating to misuse, abuse, negligence, normal wear and tear, accidents, acts of God, repairs or alterations not authorized in writing by Aqua Glass, or improper installation, storage or handling.

How Do You Get Service?

To make a warranty claim, you must contact either Aqua Glass or an authorized Aqua Glass Sales Representative by email, fax or telephone within 30 days of discovering an issue.

Masco Bath

540 Glen Ave

Moorestown, NJ 08057

E-mail: CustomerCare@MascoBath.com

FAX: 800-822-9011

Phone: 800-632-0911

Contact Hours are: Monday through Friday
8:00 AM – 6:00 PM EST

The following information is required to file a warranty claim: 1) your name, address and telephone number, 2) model number and color of product, 3) brief description of problem, 4) serial number from the product found in one of the following locations: on the product identifier tag on the rough unfinished side of the fixture, on the horizontal surface above the walls, under the Aqua Glass logo sticker on the lower right front of the fixture, or on the whirlpool motor (if applicable), and 5) proof of purchase (Required at later point of the warranty process.)

What Will We Do to Correct Problems?

To process your claim, you must allow Aqua Glass or its authorized representative to inspect the product. Aqua Glass, at its option, may elect to repair or replace the product. The replacement of a product is limited to supplying a replacement product or part (same as existing or if not available, comparable product) and does not include the cost of removal or installation where permitted by law.

How Does State Law Relate to This Warranty?

IMPLIED WARRANTIES, INCLUDING THOSE OF MERCHANTABILITY AND FITNESS FOR PARTICULAR PURPOSE, ARE LIMITED TO THE DURATION OF THIS WARRANTY. Some states do not allow limitations on how long an implied warranty lasts, so the above limitation may not apply to you. **TO THE EXTENT PERMITTED BY LAW, THIS WARRANTY DOES NOT COVER SPECIAL, INCIDENTAL OR CONSEQUENTIAL DAMAGES (SUCH AS LABOR EXPENSES) WHETHER ARISING OUT OF BREACH OF WARRANTY, BREACH OF CONTRACT, TORT, OR OTHERWISE.**

Some states do not allow the exclusion or limitation of incidental or

consequential damages, so the above limitation of exclusion may not apply to you. This warranty gives you specific legal rights, and you also may have other rights which vary from state to state. This warranty is not transferable.

Do I need to inspect the unit when it is shipped to me from Aqua Glass?

Yes. Unless shipped via Aqua Glass trucks, all goods are shipped f.o.b. Aqua Glass' factory at buyer's risk. It is your responsibility to inspect the product upon delivery and pursue claims against the carrier for concealed damage or shipping damage on all deliveries you accept.

RETURNED GOODS POLICY

Returns

1. No product can be returned for credit without prior written approval by Aqua Glass via a Returned Goods Authorization (RGA). Contact your Aqua Glass Customer Service Representative for all Returned Goods Authorizations and please allow 24 hours for approval.
2. Product returns must include protective packaging, original Clearview®, original box or customer supplied flange/apron protection.
3. All returns of product shipped according to customers' specifications are subject to a 50% restocking charge unless defective. Non-defective whirlpools and drop-ins (only) may be returned for full credit if returned in the original box with customer paying freight.
4. Unless picked up by Aqua Glass, shipment of product authorized for return for credit is made at the expense of the buyer unless the return resulted from an Aqua Glass error. Aqua Glass drivers are NOT authorized to return defective units (off loads) unless accompanied by a pre-approved RGA that authorizes return on that specific truck.
5. Models with special features (special orders), models in Aqua Glass Designer colors, special order doors and product that has been at customer locations for longer than 6 months cannot be authorized for return.
6. Aqua Glass reserves the right to accept or deny credit for returned product dependent upon the product's physical condition upon arrival at the Aqua Glass facility.
7. While Aqua Glass will make every effort to pick up returns promptly, please allow three (3) weeks for pick up.

MISCELLANEOUS

- A. Aqua Glass reserves the right to amend or revise the provisions set forth in this Customer Information Sheet in its discretion. Any amendment or revisions shall be effective upon notice to you.
- B. All sales of Aqua Glass products to you shall be subject to Aqua Glass' standard terms and conditions in effect from time to time, which are available at <http://www.mascobath.com> or by requesting a copy from Aqua Glass at 800-632-0911.

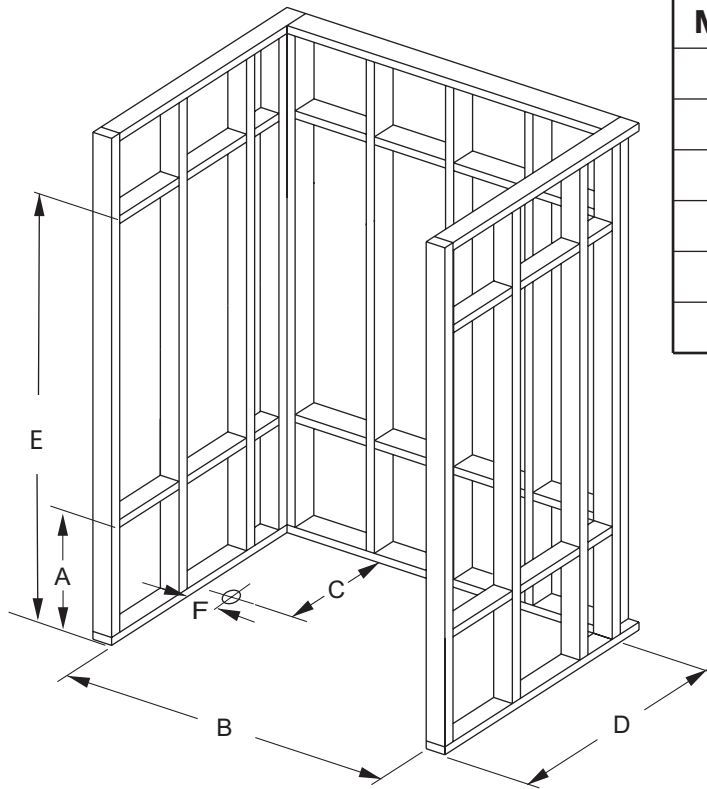
Before You Start

IMPORTANT: The Acrylic Shower Base is carefully inspected and packed for shipment. You should check your unit and if there are any problems, contact your dealer before installation.

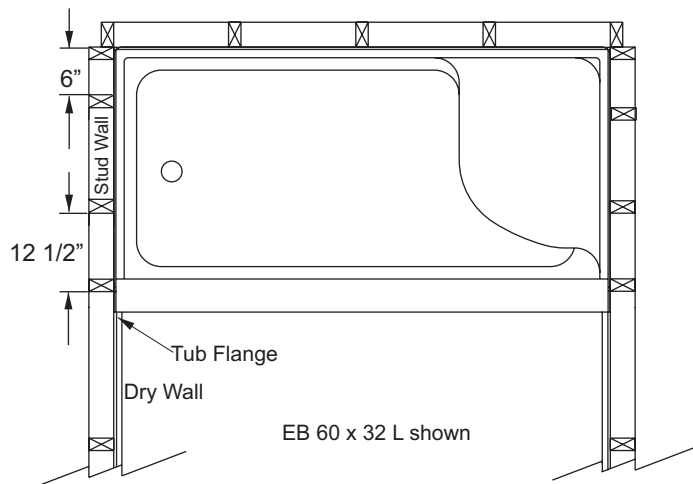
If installing walls on the shower base:

- Use correct size hole saw based on selected fixture design.
- Cut from the finished side of the unit.
- Use masking tape to mask the surrounding surface to prevent scratches and other damages.

Dimensions

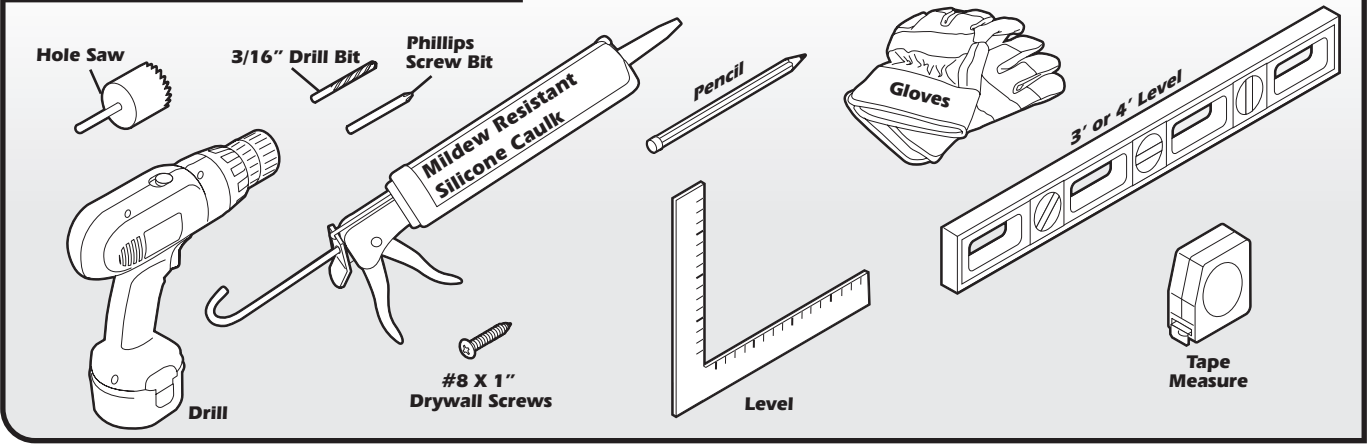


MODEL	60X32	48X36	42X42
A	23"	23"	23"
B	60"	48"	42"
C	15"	17"	21"
D	32"	36"	42"
E	80"	80"	80"
F	7-3/4"	24"	20"



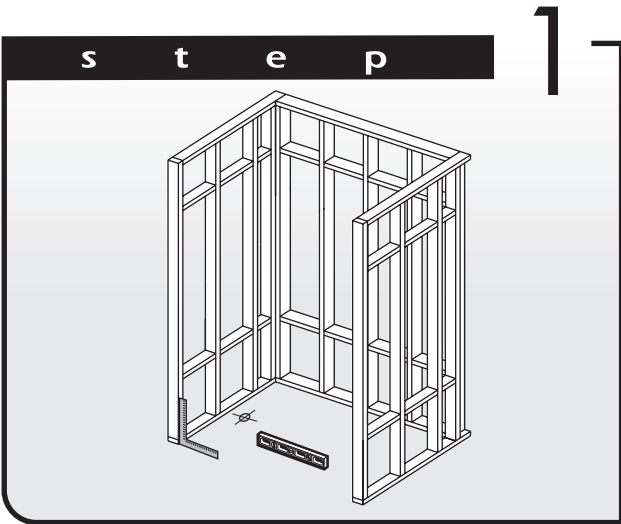
Note: Dimensions are reversed if tub is on the left hand side of shower.

Tools & Materials Needed

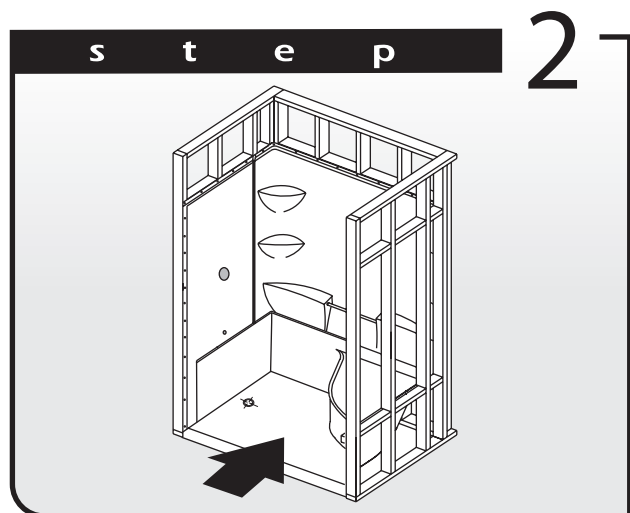


Note: Every installation is different; adjustments may be necessary. A basic example is shown.

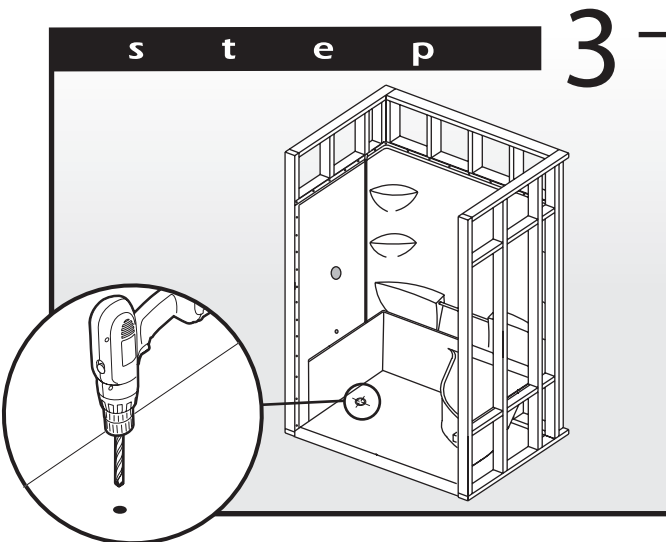
Installation



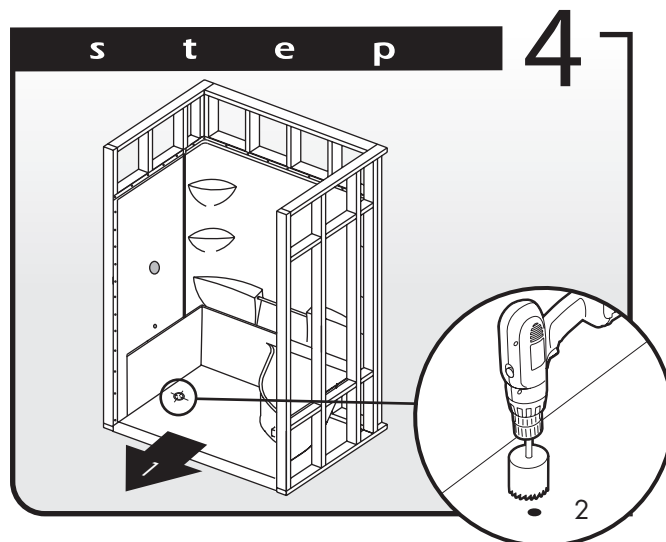
Ensure that the floor is level.



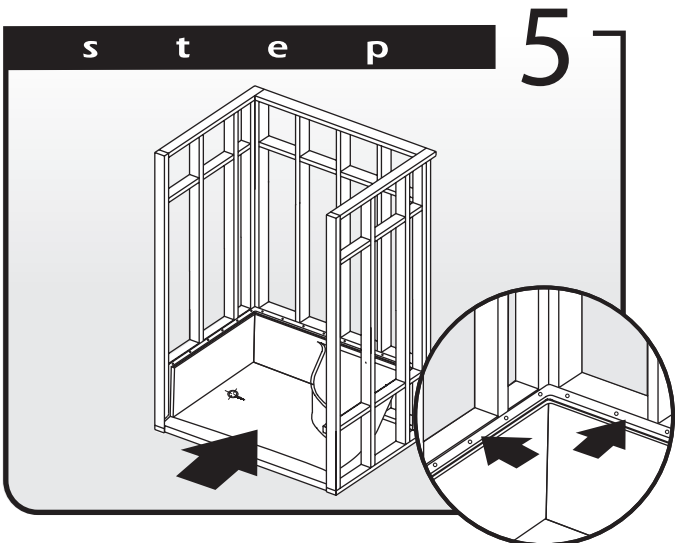
Place the unit into position and plumb vertical, shim if necessary. Dry fit drain to check position.



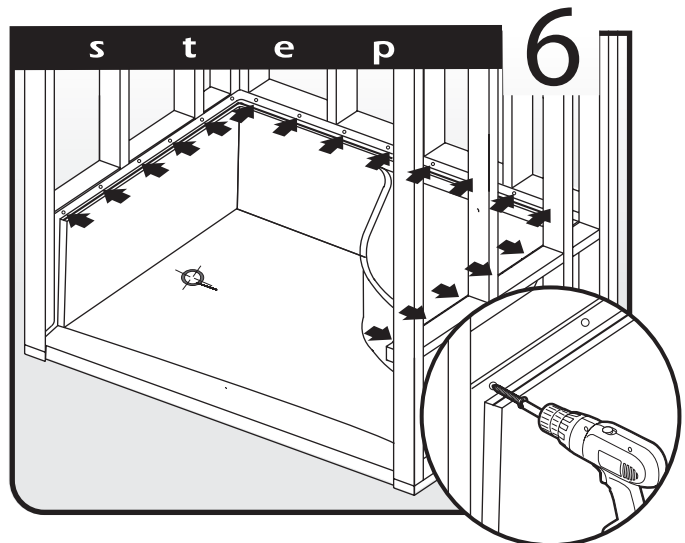
Mark and drill 3/16" pilot hole for plumbing fixture. Verify that the hole is in the right position.



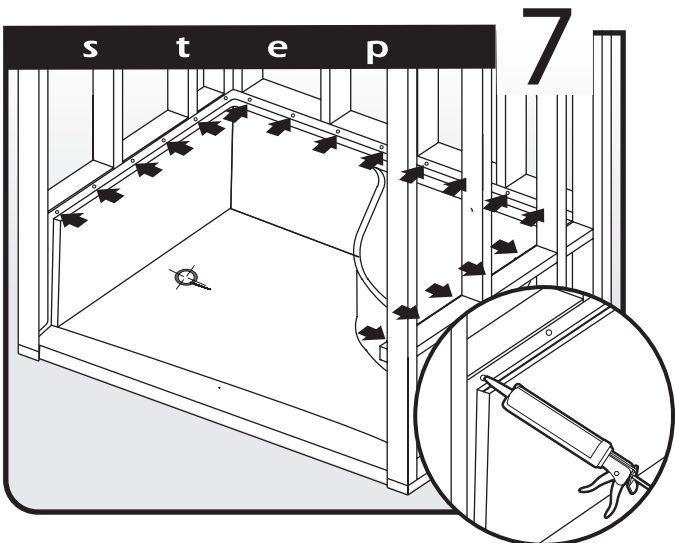
Remove unit and drill plumbing hole from finished side of unit. Use the correct size hole saw to cut the openings, using the pilot holes as guides.



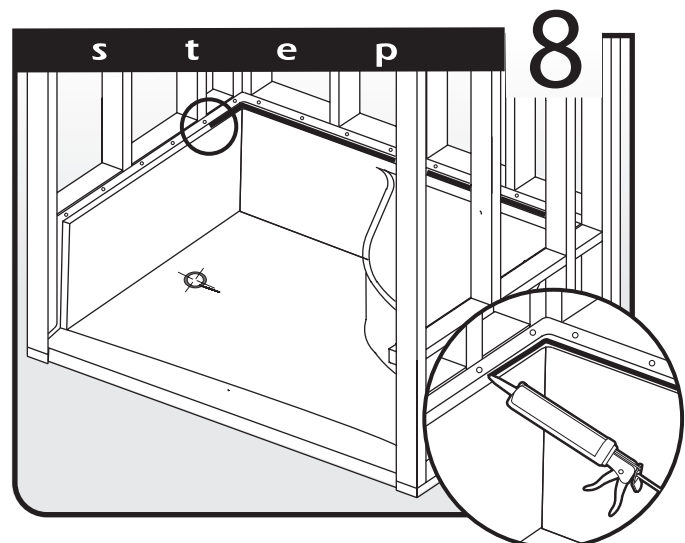
Carefully position the base section in the alcove and push flush against the framework walls as shown.



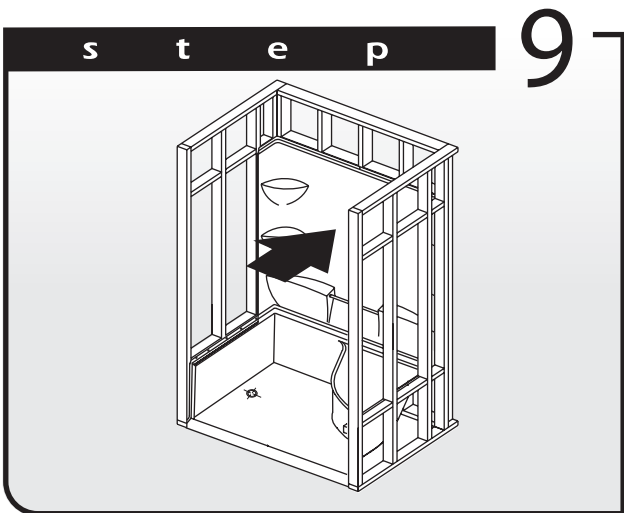
Fasten the flange of base section to studs support using drywall screws. Countersink for screw head flush fit on the acrylic flange. Please note to make sure that the unit is plumbed before fastening.



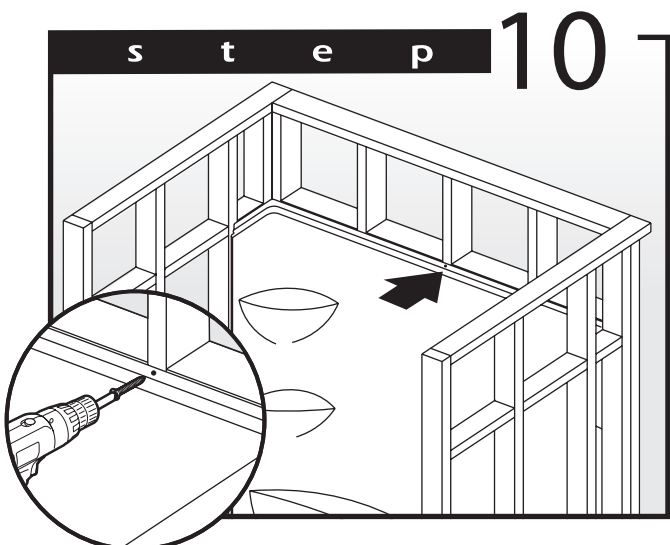
Apply silicone caulking over the head of the screws and around the openings for the fittings when they are installed.



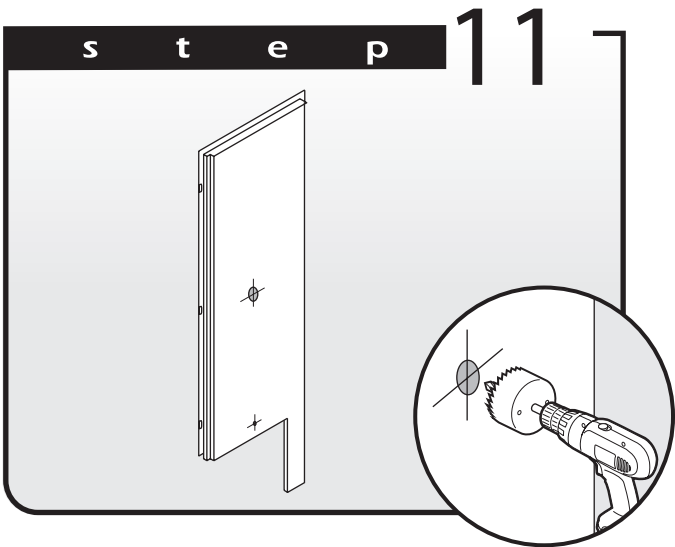
Apply a thick bead of silicone all around the back flange tub periphery and 6" around each corner.



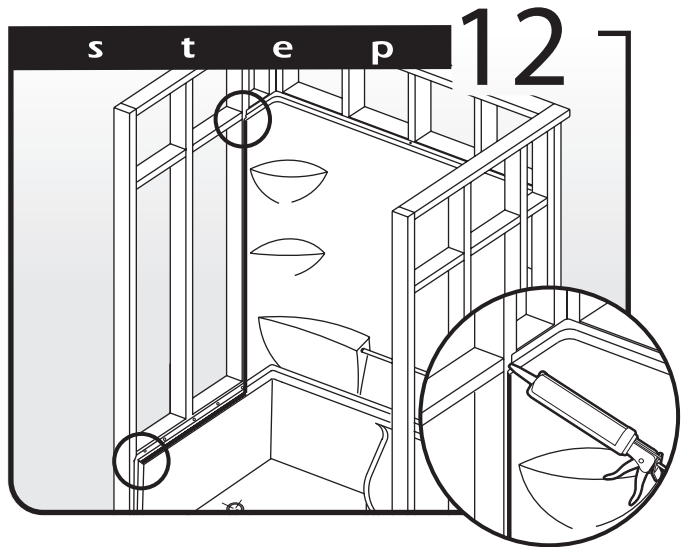
Install the back wall section of the tub.



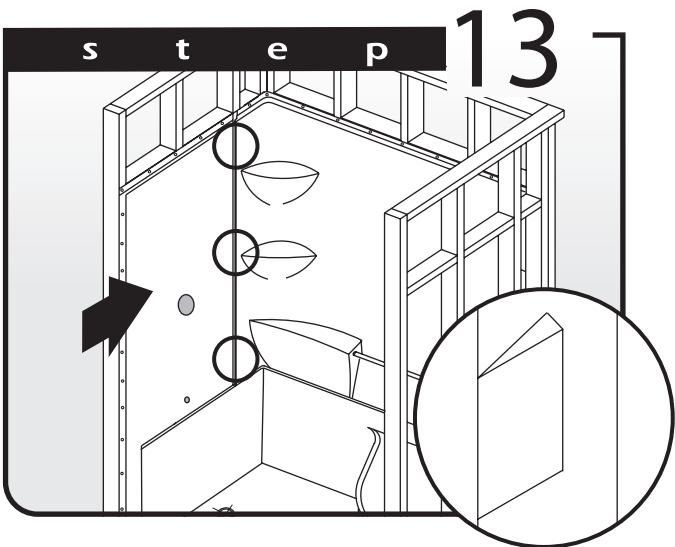
Screw top flange of back wall to stud frame with 1 screw to the center stud to hold in position.



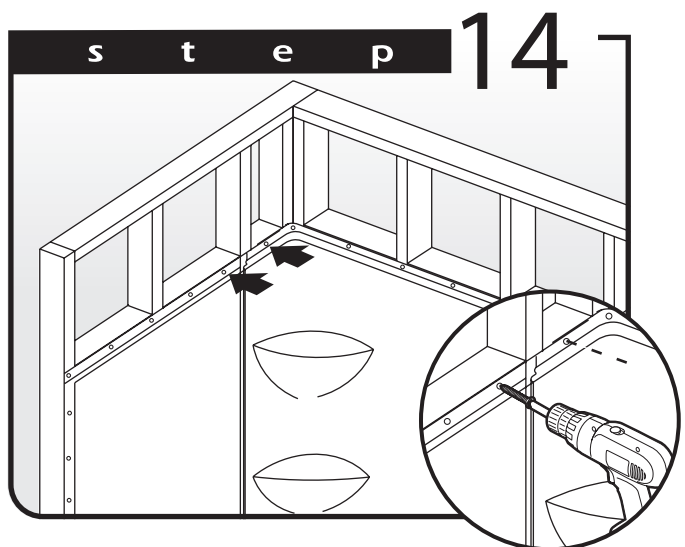
Measure and drill holes for spout and valve on wet wall.



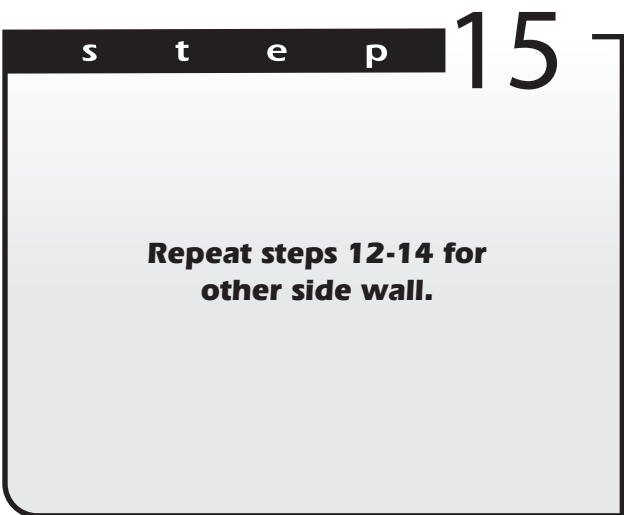
Apply a bead of silicone on the vertical flange of the side wall and the back wall.



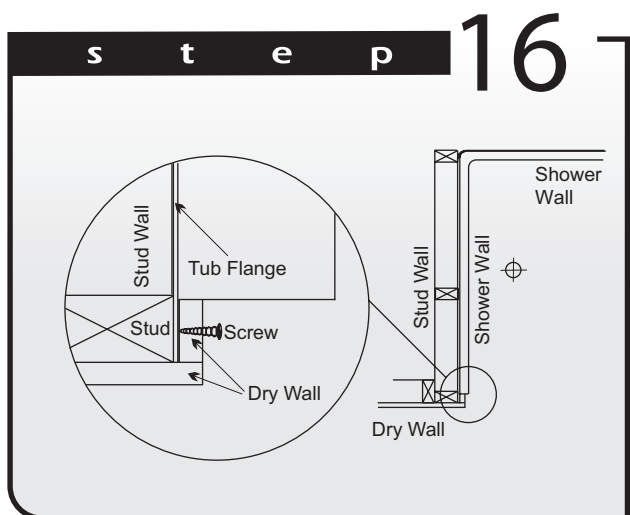
Now push the side wall section in to place.
Note: Ensure the wedge shaped notch in side wall flange engages with the back wall.



Screw the flanges of the back wall section and the side wall section close to the joint and then screw the rest of the flange with the stud support.



Repeat steps 12-14 for other side wall.



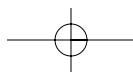
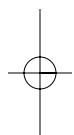
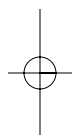
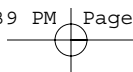
Apply trim around the shower base periphery to finish drywall, if required. Install shower door according to the manufacturer's instructions if purchased.

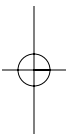
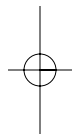
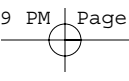
Installation Clean-Up

- It is important to remove all construction debris and foreign materials.
- Remove construction dirt and residue with a mild liquid detergent. **DO NOT** use abrasive cleaners, scouring compounds and pads, metal scrapers, steel wool, or other materials that could damage or dull the surface of the bath.
- Remove plaster carefully with a blunt wooden block having rounded edges.
- Remove paint and other stubborn stains with isopropyl (rubbing) alcohol.
- **DO NOT** use products such as acetone (nail polish remover), dry cleaning solution, lacquer thinners, gasoline, pine oil, etc.
- Test the installation after completing the plumbing, but before enclosing the bath and finishing the surroundings.
- Fill the bath with water and leave for one hour to ensure that the adjustment of the drain-overflow assembly is correct, and that there are no leaks.

Care & Cleaning

- The acrylic sheet which forms the surface of your bathtub provides one of the most durable surfaces found in modern bathrooms. Keep it bright and smooth with mild liquid household detergent, soap and water, or foaming cleansers. **NEVER USE** aromatic solvents, abrasive cleaners, scouring compounds or pads, strong liquid cleansers, or other material that could damage or dull the surface of the bath.
- Restore surface gloss by applying a very fine rubbing compound and polishing the surface by hand or with a power buffer. Finish with an application of Mirogloss® or a good quality automotive wax.
- Remove minor scratches and scuffs as follows. First, wet sand the area with 600 grit wet sandpaper until the surface is smooth. Finish with 1200 grit wet sandpaper, then restore the gloss.





Part #AG 07412



CAN. PATENT Number 1,157,602
U.S. PATENT Number 4,578,832

E-Series: For the most current installation and operating instructions, please visit our website at www.mascobath.com

